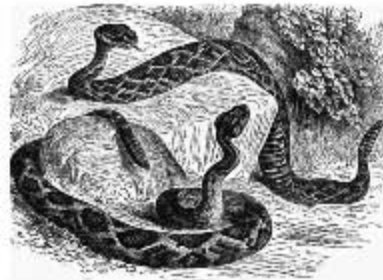


Rules continued:

- Our trails are for walkers/joggers/hikers only. Wheeled and/or motorized vehicles and/or horses are not permitted.
- A fire in these hills would be disastrous. Fires, fireworks, and smoking is prohibited.
- Pets are welcome, but must be on a 6-foot leash, and you must clean up after them on the trails.
- Alcohol is prohibited on the trails, just as it is in the developed part of the park.
- Hunting and all firearms are prohibited, including slingshots, air rifles, & paintball guns.
- Please carry a litter bag with you and help by picking up other people's trash, and your own.
- Please stay on the trails, and do not take shortcuts on switchback trails.
- Observe and enjoy the wildlife and plants, but please leave them undisturbed.
- Report any suspicious persons or activities, as well as any trail maintenance issues to the Park Manager or Park Ranger.

DID YOU KNOW???

That all of the Hiking/Nature Trails in the hills were constructed by volunteers and are completely maintained by volunteers? For info on how you can help, check out our web site at www.castroville.com. Call 931-2157 or 931-2692 for more info on our "Adopt-A-Trail" project and/or our "Friends of the CRP" organization.



**WATCH OUT FOR SNAKES
KEEP CHILDREN AND PETS
CLOSE TO YOU AS YOU HIKE.**

**DURING DEER SEASON, WEAR
LIGHT COLORED CLOTHES
WHEN YOU HIKE.
THERE MAY BE HUNTERS ON
ADJACENT PROPERTY!**

Revised May, 2008

Castroville Regional Park Hiking/Nature Trails



816 Alsace Street
Castroville, TX 78009
For More Information Call
830 931 4070



Suggestions For A Safe Trail Walk

Be suitably dressed for the weather.

Long pants, a long sleeved shirt, hiking shoes or boots, and a cap are always good.

NEVER HIKE ALONE, and always make sure that someone knows where you have gone and what time you should return.

TAKE THESE THINGS WITH YOU:

A map of the trail

Cell phone

Sunglasses

Insect repellent

Bottled water

First aid kit

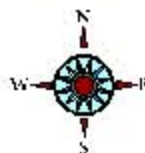
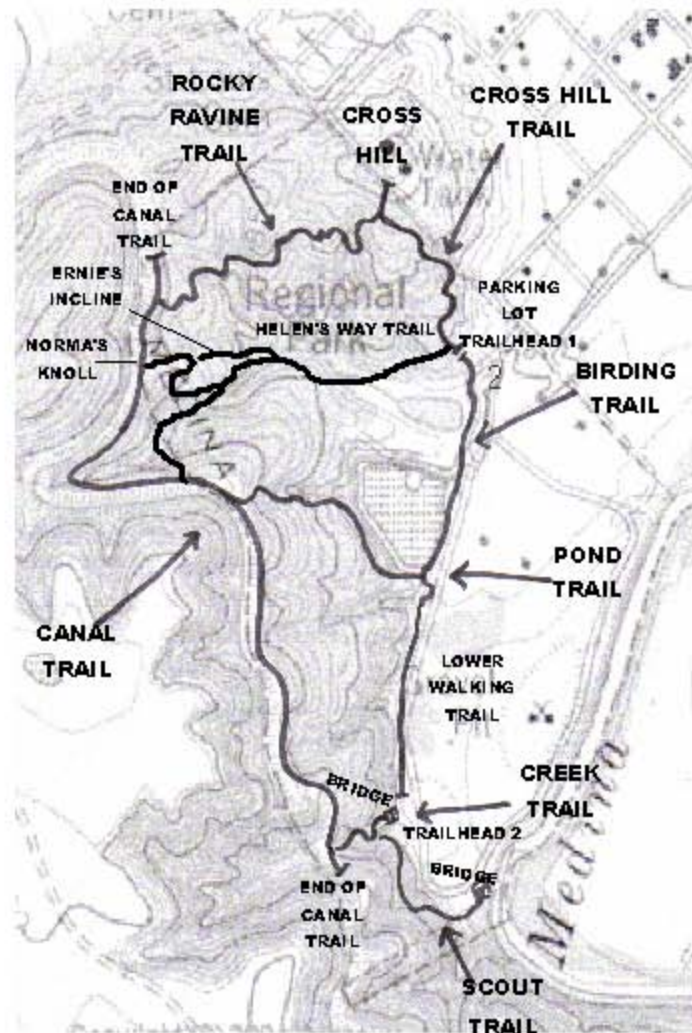
Sunscreen



Distances

Cross Hill Trail	1384' / .26 mile
Rocky Ravine Trail	1900' / .36 mile
Creek Trail	550' / .1 mile
Canal Trail	4200' / .8 mile
Birding Trail	2230' / .4 mile
Pond Trail	1500' / .29 mile
Scout Trail	550' / .1 mile
Helen's Way Trail	2300' / .4 mile
Norma's Knoll Trail	500' / .1 mile
Ernie's Incline (New)	????
Lower Walking Trail	4200' / .8 mile

Trails Map



Rules

- **Hiking in our hills is AT YOUR OWN RISK!**
- Children under age of 15 should be accompanied by an adult.
- All hiking trails are characterized by certain inherent dangers. Dangers on these trails include rattlesnakes, coral snakes, poison oak, thorny brush, ticks, skunks, as well as rugged, rocky and unstable terrain.
- Hikers should read and obey any/all caution and/or warning signs. They are there for your information and protection.
- The historic Medina Lake Canal, adjacent to the Canal Trail, is perilous in itself, for it is an open waterway with unstable banks, fluctuating water levels and often swiftly moving water. Hikers should keep to the center of the marked trailway. The water and the banks of the canal are off limits.
- The effluent ponds along the Birding Trail and Pond Trail are also off limits, as is the city of Castroville Waste Water Treatment Plant, Animal Control Facility and adjacent Surplus Property Storage Area.

(Rules continued on back)